



**ALUMASC
ROOFING**

OUR BELIEFS & VALUES



Proud to have received London Stock Exchange's Green Economy Mark

CONTENTS

WELCOME

OUR REASON
FOR EXISTENCE

WHAT WE
BELIEVE

WHO ARE WE?

WHAT MAKES
US GREAT TO
WORK WITH?

OUR COMMITMENT
TO A PROSPERING
FUTURE

OUR COMMITMENT
TO THE FUTURE

ENVIRONMENTALLY
FOCUSSED



OUR ENVIRONMENTALLY
FOCUSSED COMPANY

ENVIRONMENTALLY
FOCUSSED
PRODUCTS

HOW DO WE
RESPONSIBLY
SOURCE?

RESPONSIBLE
SOURCING

HOW ARE WE
ETHICALLY
DRIVEN?

ETHICALLY
DRIVEN
ACTIVITIES

WHAT
MAKES US
SUSTAINABLE?

ABOUT
ALUMASC ROOFING

WELCOME TO OUR BELIEFS AND VALUES

Thank you for taking the time to visit us! We want to share with you our beliefs and values on what we feel are the right things to do in our industry and how we do them.

Whilst roofing is notoriously not a place that people would describe as 'green' or 'environmentally friendly'...we all know that it isn't. For us it's about mutually doing our bit in shaping the way we work (and also who we choose to work with), to be as ethically responsible as we possibly can be and give back to the planet as much as we can in return.

This guide tells you a bit about ourselves - why we do what we do, what we do and how we do it, whilst protecting, preserving and respecting in all that we do - contributing towards a better future for all.

If you wish to hear more about us and the other positive changes we are making to work towards a better future, then please don't hesitate to get in touch with us at info@alumascroofing.com

Thank you again for your time.



OUR REASON FOR EXISTENCE

‘To deliver long lasting roofing solutions, that consider our planet’



WHAT WE BELIEVE

We stand for protect, preserve and respect in all that we do.

Be that for our people, our products, or the world we live in - to secure a prosperous future for all.

We don't just think of the here and now - we consider how we can make a positive difference to the world that follows us, by working with like-minded people who share the same beliefs that we do.



WHO ARE WE?

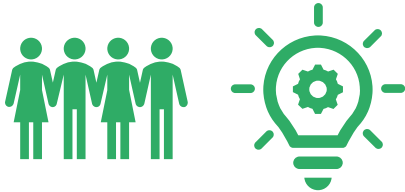
Your Complete Roofing Solution

Environmentally Focused – Responsibly Sourced – Ethically Driven



WHAT MAKES US GREAT TO WORK WITH?

OUR PEOPLE



Like-minded individuals, with knowledge that spans a (roof's) lifetime.

We don't just have lots of knowledge - we are also really nice, honest people who will only sell you what's right for you. And we don't switch off our phones or hide away when the going gets tough.

If you don't get an 'out of office' then rest assured, one of us will get back to you the same working day.

OUR SERVICE

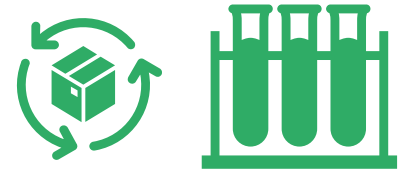


With solutions that give a lifetime of protection, there's no problem that can't be resolved.

We are so confident about the durability and efficiency of our materials, that our warranties are amongst the best available.

Couple that with sound knowledgeable advice, bespoke reporting and technical support excellence, what more could you possibly want?

OUR PRODUCT

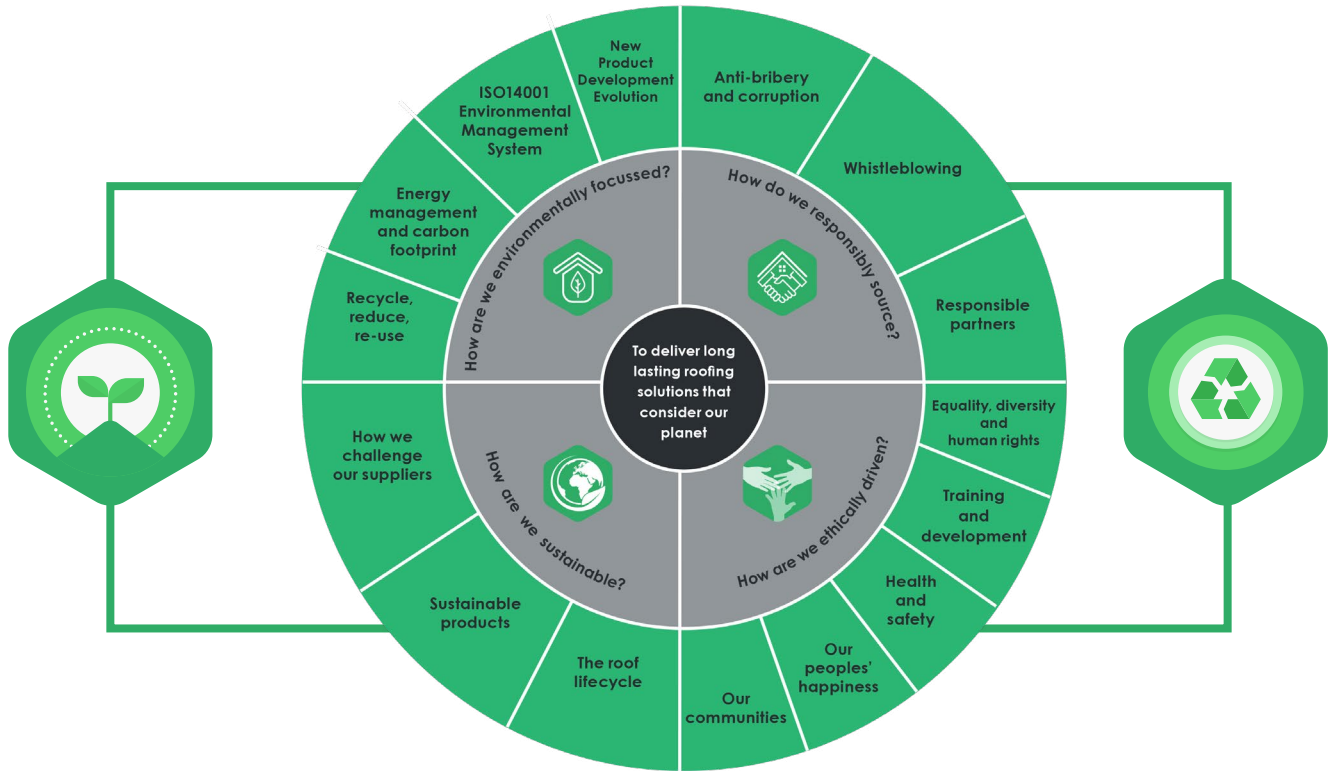


Some of the most durable roofing materials you will find - tested in-situ, not just in the laboratory.

We focus on durability, longevity and the roof life cycle in our offering, to make sure you get the most from our materials and reduce the impact on the earth.

Our materials are tested in-situ, as well as in the labs, so we can prove that in real-life situations they will last the distance.

OUR COMMITMENT TO A PROSPERING FUTURE



'Working responsibly to reciprocally contribute to our planet'

OUR COMMITMENT TO THE FUTURE

Each year we introduce initiatives as part of our commitment to reciprocally give what we can back to the planet. Our environmentally focussed activities that have recently been implemented include:

✓ 100% of site and office lighting is LED.

✓ 100% electric company car vehicles introduced.

✓ 100% of office waste is recycled.

✓ Our promotional merchandise products are environmentally friendly and made from recycled materials where possible.

✓ 100% electric forklifts used on site.

✓ 100% of company brochures are e-brochures.

✓ 25% reduction in travel*.

✓ 100% refillable ink cartridges used on site.

✓ 25% reduction in hotels*.



*based on 2019 (pre-covid) figures, average per employee

HOW ARE WE ENVIRONMENTALLY FOCUSSED?

RECYCLE, REDUCE, RE-USE



We do all we can to have as little negative impact on the earth as possible. We champion a Recycle, Reduce, Re-use approach in operations across all our sites and essentially, during our product sourcing too.

We aim to deliver products produced from the by-products of others, to preserve the earth's resources and send less waste to landfill.

ENERGY MANAGEMENT AND CARBON FOOTPRINT



If it's not essential, we don't do it. We conserve energy and carbon footprint by focussing on 'Reduction' across the board.

These practices focus on our transport, our sites, our utilities and our ways of working. So if it's not really important, we don't do it and we encourage others not to as well.

NEW PRODUCT DEVELOPMENT EVOLUTION



We are always seeking out cleaner and greener solutions to offer. We strive to source products that have existed before, or can give something back in their end-of-life.

We work with suppliers who not only share our beliefs, but who also commit to do all they can to evolve their new product development practices to deliver our mutual goal.

'We do all we can to reduce the impact on the planet'

OUR ENVIRONMENTALLY FOCUSSED COMPANY



We introduced 100% LED lighting throughout our head office in November 2021.



All new marketing materials are in e-brochure format over printing.



We have specialist waste partners for all main waste on our head office site.



Electric vehicles make up the majority of our company cars.



50% of head office water flows to a natural stream over WWTW.



We introduced electric forklifts to our site, and removed all others during 2022.



0% of our head office waste goes to landfill – it is all sorted, and then recycled or re-used.



We have UV deflection on all our head office windows to conserve energy.



All new promotional merchandise is manufactured from recycled products and is recyclable.



We encourage car sharing and trains over car travel if luggage allows.



We encourage video calls where possible over face-to-face meetings, with many staff working at home.



‘We do all we can to reduce the impact on the planet’

OUR ENVIRONMENTALLY FOCUSSED PRODUCTS



Our Derbigum by Alumasc membranes have a life expectancy of up to 50 years, 35 year warranty and are 100% recyclable.



Our Derbigum by Alumasc NT product contains 30% recycled materials, and Derbigum Olivine neutralises CO₂.



Derbigum Olivine membranes have a naturally occurring mineral upper layer that neutralises carbon dioxide via an irreversible chemical reaction when it comes into contact with rainfall.



Our BluRoof mitigates the issues caused by storm water. It reduces pressure on drains and infrastructure in built-up areas by detaining and reducing the run-off of water. It is a natural way of removing water with no excavation drainage needed.



Our green roofs create habitat for bees, insects, and wildlife. They can be used to add to green credentials, introduce greenery to built-up areas, and reduce the heat island effect in city centres.



Our green roofs offer natural energy efficiency. They are warm in winter, cool in summer and they extend the life of the waterproofing with their protective layer.



Our METcoat can extend the life of an existing metal roof up to 25 years, reducing the amount of waste to landfill caused by installing a new roof, along with the labour and cost savings.



Our METcoat and Caltech can be used to reduce solar gain, helping to keep the building cooler.



Our Airtile is made from high quality Aluzinc Steel and plastic versus using concrete, which is a huge CO₂ polluter. It has a 60+ year life span, 40 year warranty and can be recycled at the end of it's life. It is also lighter in weight and reduces fuel consumption in less deliveries and subsequent cheaper transport cost.



Our insulation reduces heat loss and therefore reduces energy loss and energy bills. We have options that are 100% fully recyclable, non-combustible, and manufactured from natural stone taken from the earth.



Our biosolar and solar energy solutions reduce carbon footprint, as they generate renewable clean energy, without burning fossil fuels. Biosolar contributes positively to environmental assessments, including BREEAM and BNG.

'We conserve energy and carbon footprint by focussing on 'Reduction' across the board'

HOW DO WE RESPONSIBLY SOURCE?

ANTI BRIBERY & CORRUPTION

We conduct our business in an honest and ethical manner and only work with partners that can demonstrate their own values and responsible conduct.

We are committed to acting professionally, honestly and fairly and will not condone any acts deemed to be bribery or unethical.

'We work ethically and won't condone those that don't'



RESPONSIBLE PARTNERS

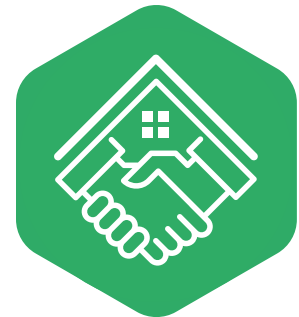
We are very selective about who we choose as partners.

We only work with those who have the same standard of business ethics as ours and can demonstrate continual improvement in their own operations, ways of working and social considerations that make a positive impact on the rest of the world.

WHISTLEBLOWING

We have a whistleblowing policy in place for any activities considered to be immoral.

We take any reports of inappropriate behaviour very seriously and ensure the protection of anyone who has to whistle blow with continuous support and conceal their identity throughout.



OUR RESPONSIBLE SOURCING

Each year we ask our partners to demonstrate how they are living and sharing our values of Environmentally Focussed, Responsibly Sourced, and Ethically Driven and expect continual improvement of activities implemented.

- ✓ We ask our partners to continually evolve with their product developments, energy savings and ways of working.
- ✓ We have a responsible sourcing policy in place.
- ✓ We have an anti-bribery policy in place, with a full register of goods received and pecuniary interest form.
- ✓ We have a whistleblowing policy in place.
- ✓ We ask all our main suppliers to confirm they are not in breach of the slavery act.
- ✓ We have BBA checked and approved proven track record of products.
- ✓ We perform an annual on-site visit and audit of all suppliers' factories.



'We work ethically and won't condone those that don't'

HOW ARE WE ETHICALLY DRIVEN?

EQUALITY, DIVERSITY & HUMAN RIGHTS

We have a zero tolerance policy for discrimination of any kind. We are committed to both understanding and respecting fundamental human rights.

It is part of our culture to acknowledge and accept individual differences and treat everyone equally.

TRAINING & DEVELOPMENT

We want our people to progress. We support all our people through their career paths, with training, regular appraisals and progression plans.

We make sure every employee knows the next career step towards their long term future with us.

'We put peoples' happiness at the heart of all we do'

OUR PEOPLES' HAPPINESS

We credit ourselves on being a 'Great Place To Work', by enjoying social activities outside of work together, encouraging everyone to have a voice and avoiding hierarchical management.

HEALTH & SAFETY

We work as safely as we can. If our people don't have the knowledge, they will be sufficiently educated, trained and given the right tools to protect themselves and others to ultimately work safely.

Our regular risk assessments continually seek to identify any new potential hazards and rectify them before they become a problem.

OUR COMMUNITIES

We always seek to protect and preserve our communities. The social consideration of the community is always at the forefront of planning our project design, delivery, contractor selection and recommended disposable methods.

It's our goal to make sure the community is not negatively affected by us.



OUR ETHICALLY DRIVEN ACTIVITIES

- ✓ We have an Equality, Diversity, and Human Rights policy in place.
- ✓ We use a scoring policy in recruitment with candidates able to access interviewers' notes following the interview.
- ✓ We have a strong Health & Safety culture, driven by our training.
- ✓ We select an annual charity to work with and support throughout the year.
- ✓ A tree is planted in the community on our CO₂ removal projects (using Derbigum Olivine).
- ✓ Our staff are constantly involved in many charitable events and causes each year.
- ✓ For key environmental dates such as World Earth Day – we perform a litter pick or other supporting activity.

OUR PEOPLES' HAPPINESS

- ✓ We are a family – we focus on team building with cake bakes, breakfast with the boss, and social gatherings when possible.
- ✓ We give our staff Mental Health training and have a 24/7 employee helpline to support them continually.
- ✓ We perform Occupational Health checks bi-annually on our staff.

'We put peoples' happiness at the heart of all we do'

WHAT MAKES US SUSTAINABLE?

THE ROOF LIFECYCLE



SUSTAINABLE PRODUCTS



HOW WE CHALLENGE OUR SUPPLIERS



It's about durability with us. Durability, as well as being efficient and environmentally focussed - offering true sustainability.

The longevity of our products is always at the forefront of our mind when specifying and selecting from our product range, to ensure the roof lifecycle is economically viable.

Our best performing products contain industry leading amounts of recycled materials. These materials are sourced through the end of life cycle from previously operational roofs and by-products from other sources.

We continually add efficient products such as these, allowing us to responsibly contribute towards a better world.

We put pressure back on our supply chains to source ethically. We encourage the use of recycled and bio-degradable packaging, the re-use of transport pallets and merging orders to reduce deliveries.

Our suppliers are also asked to regularly demonstrate to us their own positive steps and continual improvement in giving back to the planet.

'We focus on durability, re-use and economic viability'

ABOUT ALUMASC ROOFING

Our range of flat roof systems, waterproofing, green and blue roof solutions are ideal for any new build or roof refurbishment project. Our unrivalled range of BBA Certified flat roof systems are backed by:



- ✓ Happy and helpful on-site and office-based technical support people
- ✓ Materials application by our trained Alumasc Registered Contractors
- ✓ Committed to continuous improvement through our ISO9001 Quality Management System and ISO14001 Environmental Management System standards
- ✓ Extended warranties, as we are confident of our material's durability!
- ✓ Post-project handover package for all you need to know
- ✓ After-sales support service, should you need us in the future!

The portfolio includes [Derbigum](#) and [Eurorooft](#) flat roof membranes, [Hydrotech](#) hot-melt structural waterproofing, [Eurorooft Caltech](#) and [Caltech QC \(Quick Cure\)](#) cold applied liquid roofing, [Alkorplan](#) single-ply membranes, Blackdown [green roofs](#), [BluRoof](#) stormwater management, [Airtile](#) lightweight roof tiles, and a full range of complementary accessories such as [Sure-Foot](#) guardrail edge protection systems and [Roof-Pro](#) building services supports.

Alumasc Roofing also provide roofing solutions that are perfect for projects where there is limited construction depth or problematic spacing such as [Alumasc Vtherm Vacuum Insulated System](#).

Thank you for your time!





**ALUMASC
ROOFING**

Your Complete Roofing Solution

Environmentally Focussed – Responsibly Sourced – Ethically Driven

www.alumascroofing.com



+44 (0)1744 648400



info@alumascroofing.com



[alumascroofing](https://www.linkedin.com/company/alumascroofing)



[alumascroofing](https://www.instagram.com/alumascroofing)



[alumasc roofing](https://www.facebook.com/alumascroofing)