

# MAKING A SPACE A PLACE



Specialists in the Supply of Green Roof Systems, Balcony  
Finishes and Podium Landscaping Solutions

# CONTENTS

**WELCOME**

**OUR REASON  
FOR EXISTENCE**

**WHAT WE BELIEVE**

**WHY ROOF  
AND PODIUM  
LANDSCAPING?**

**BENEFITS OF ROOF  
AND PODIUM  
LANDSCAPING?**

**POSITIVE  
ENVIRONMENTAL  
IMPACT**

**PODIUM AND  
LANDSCAPING  
SERVICE**

**PODIUM AND  
LANDSCAPING  
SOLUTIONS**

**GREEN ROOF  
SOLUTIONS**

**WHAT MAKES US  
GREAT TO WORK  
WITH?**

**OUR PEOPLE  
AND SERVICE**

**FAQs**

**GREEN ROOF  
FAQs**



# WELCOME

Thank you for taking the time to visit us!

We want to take the time to introduce you to Blackdown Roof & Podium Landscaping – formerly known as Blackdown Greenroofs, an Alumasc Roofing company.

The reason for our name change is because we do so much more than green roofs (but we do them too!).

Whether it's an enjoyable space for residents, a wildlife friendly environment or to improve the aesthetics and sense of wellbeing into your project. Our green roof and podium landscaping solutions offer the designer a limitless choice of roof, podium, and balcony finishes.

We offer a full roof and podium landscaping solution which includes but is not limited to; decking and paving, balconies and planters, children's play areas and artificial grass. In summary we provide all that is needed for key recreational and enjoyable areas in your environment. You will hear more about our vast offering within!

Please read on to hear all the ways that our products and solutions allow you to help the environment, introduce bio-diverse habitat, and increase peoples' happiness – what's not to like!

Thank you for your time.

- ✓ **Decking and Paving**
- ✓ **Artificial Grass**
- ✓ **Play Areas and Equipment**
- ✓ **Safety Surfaces**
- ✓ **Balconies**
- ✓ **Green Roofs – Intensive, Semi-Intensive and Extensive**
- ✓ **Pergolas and Sculptures**
- ✓ **Planters**
- ✓ **Gates and Fencing**



# OUR REASON FOR EXISTENCE

‘To deliver long lasting roofing solutions, that consider our planet’



# WHAT WE BELIEVE

We stand for protect, preserve and respect in all that we do.

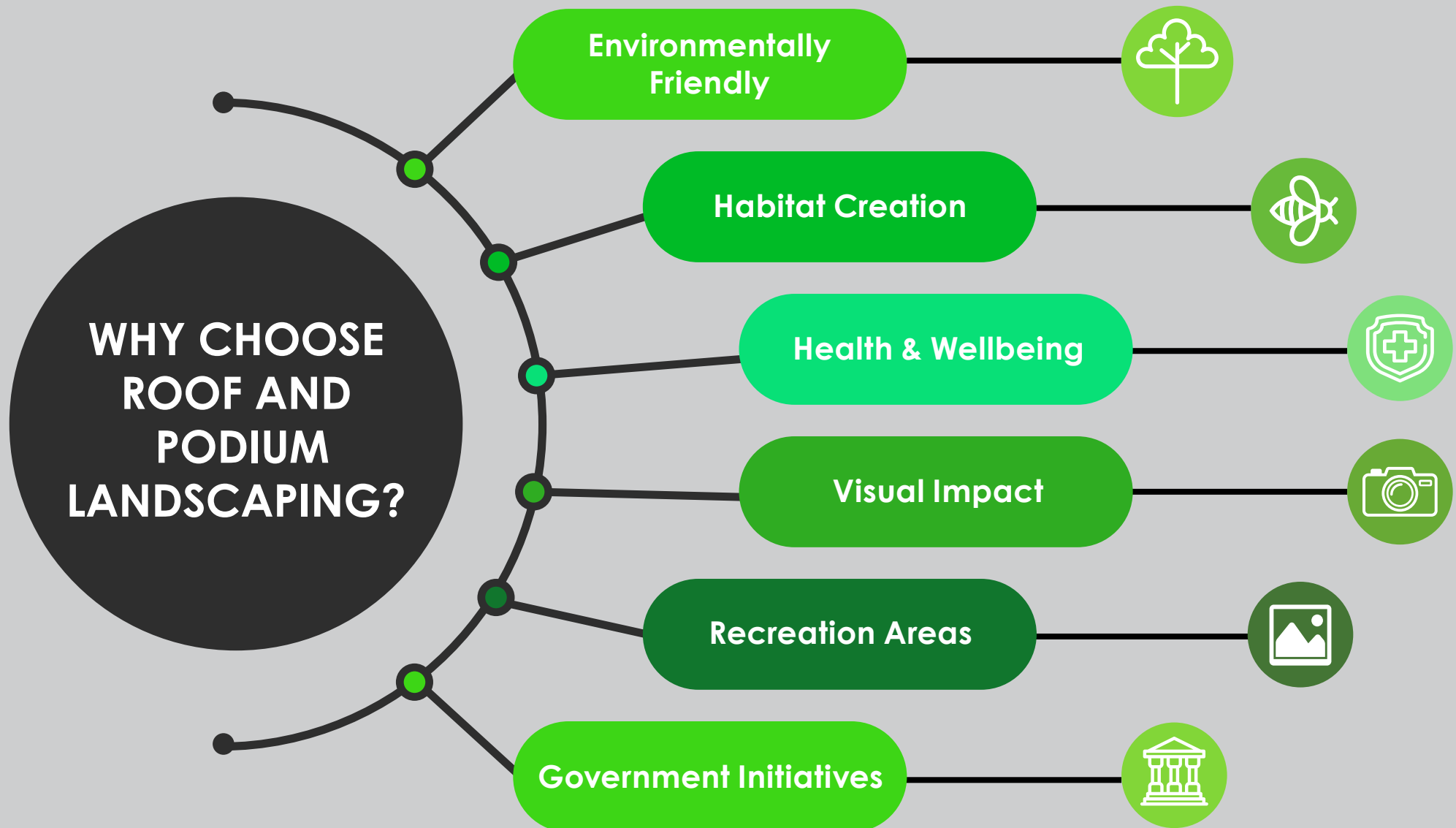
Be that for our people, our products, or the world we live in  
- to secure a prospering future for all.

We don't just think of the here and now  
- we consider how we can make a  
positive difference to the world  
that follows us, by working  
with like-minded  
people who share  
the same beliefs  
that we do.



# WHY ROOF AND PODIUM LANDSCAPING?

Roof and podium landscaping can have a positive effect in many ways. Not only do they help the environment, but they are aesthetically pleasing and can provide much needed recreation and play areas.



# BENEFITS OF ROOF AND PODIUM LANDSCAPING

Roof and Podium landscaping can reduce environmental impact, introduce habitat and have a positive impact on mental health, happiness, and wellbeing. They also play a key role in encouraging social interaction and enjoyment for people.



## Environmental Focus

- Air purification
- Stormwater management
- Carbon footprint reduction
- Heat island effect
- Noise and energy insulation
- Air quality targets
- Solar energy



## Habitat Creation

- Create habitat for Bees, plants, insects, animals and birds
- You can target specific habitat types to introduce
- You can replicate target species
- Reintroduce habitats
- Bespoke Habitat incidentals – including bird boxes, bee boxes etc



## Health & Wellbeing

- Increased mental and physical wellbeing
- Exercise is linked to feeling better
- Being in nature produces positive calming endorphins
- The presence of nature can make you feel happy
- A more visually appealing surrounding can be mood boosting

# BENEFITS OF ROOF AND PODIUM LANDSCAPING



## Visual Impact

Aesthetically pleasing

The theme can be made interesting and functional

Design flair (freedom of design) to be creative and stand out

Nature sliced amongst architectural features

Reduce/soften the concrete impact of the building



## Recreation Areas

Children's play areas, play grounds and parks

MUGAs – Artificial turf for football pitches etc

Social areas – allotments, seating areas/picnics

Architectural features – water features, sculptures and arbicultural features

Garden features including trees, shrubs and plants



## Government Initiatives

Planning permission applications governed by the local authority can be easier due to green credentials

Directives including COP26 and government green credentials mean green roofs are required more and more as part of the green plan



# POSITIVE ENVIRONMENTAL IMPACT

Introducing green roofs and landscaping naturally reduce the environmental impact on the planet. They provide natural insulation, photosynthesis, and transportation along with many other environmental benefits to protect the world that follows.

## How Does It Help?

### Air Purification



Greenery catches particulates that are in the air and act as a filter



Photosynthesis - Plants absorb CO<sub>2</sub> and turn the CO<sub>2</sub> into oxygen

### Stormwater Management



Green roofs capture rainwater in both the growing medium and drainage layer before runoff occurs



Transportation - Plants absorb some of the water captured and transport it to the leaves



Evaporation from air and sun occurs

### Carbon Footprint Reduction



Photosynthesis - Plants absorb CO<sub>2</sub> and turn the CO<sub>2</sub> into oxygen

# POSITIVE ENVIRONMENTAL IMPACT

## How Does It Help?

### Heat Island Effect



Green roof doesn't heat up like concrete and glass does



City centres are 3-4% higher in temperature than rural areas



Green roofs lower ambient temperature of city centres

### Noise and Energy Insulation



Green roofs are cold in summer, warm in winter



Can help to naturally reduce the air conditioning and heating costs



The green roof surface reduces solar gain



Adding mass with a green roof can reduce/deaden noise

### Air Quality Targets



Greenery catches particulates that are in the air and act as a filter



Councils have their own air quality targets

### Solar Energy



Higher yield from solar panels on a green roof



Concrete roofs are too hot at times of warm weather to be truly efficient, due to the reflection back off the concrete

# OUR ROOF PODIUM AND LANDSCAPING SERVICE

We offer a comprehensive range of hard and soft surfaces for roofs and podiums.

This includes specimen trees and associated supports, aeration and irrigation requirements, specialist planters, gates and railings, permanent fully automated irrigation systems, children's play equipment and safety surfacing, artificial surfacing and of course paving.

By involving us at the design and planning stages of your project we can offer valuable assistance and expertise which could save you time and money, for example in relation to siting and service requirements, planning, and installation methodology.



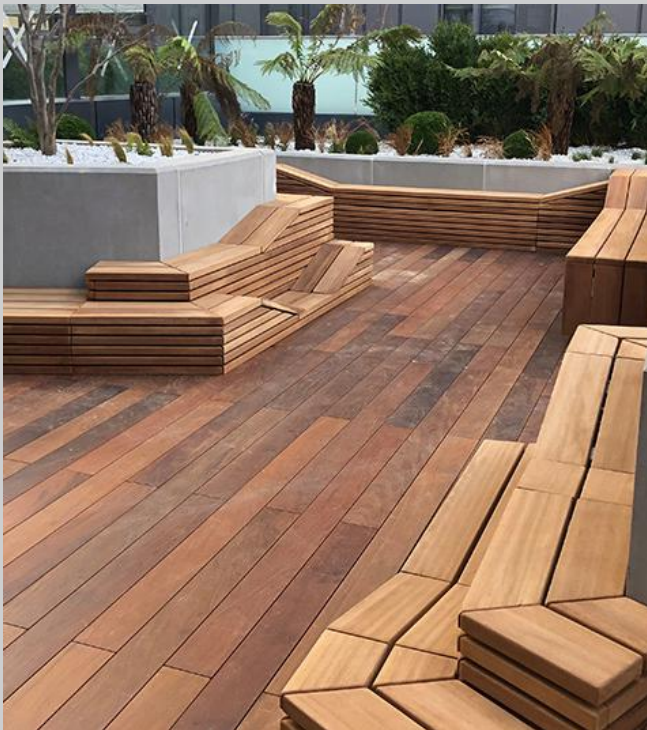


# OUR ROOF PODIUM AND LANDSCAPING SOLUTIONS



## Decking & Paving

We work with many of the UK's largest suppliers and manufacturers of paving and decking, supplying both natural and composite materials on post and rail or pedestal systems, including integration of these surfaces with linear channel and threshold drains.



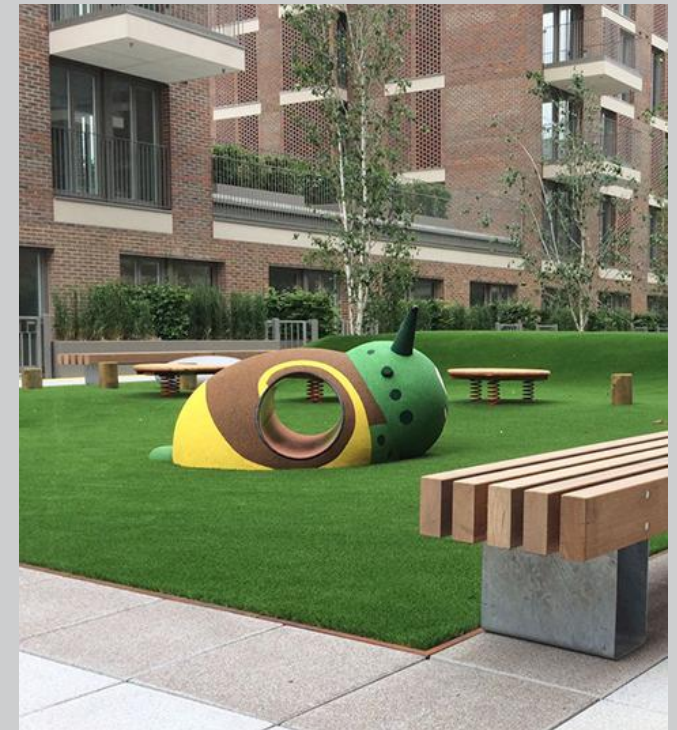
## Planters

We can supply simple 'off the shelf' standard planters, and provide you with advice and information on bespoke versions, so you can select the planter most suited to your needs.



## Play Equipment

We work with UK and European suppliers of play equipment, gates and pergolas and in some cases, commissioned artists to provide a complete and bespoke solution to communal recreational areas within your roof scheme.





# OUR ROOF PODIUM AND LANDSCAPING SOLUTIONS



## Hard & Soft Surfaces

We have solutions for both hard and soft surfaces. We now have solutions for safety surfaces, artificial grasses and play area surfaces which meet national guidelines.



## Permanent Irrigation

To ensure that planting is kept healthy and vital, many of the planted elements require fully automated permanent irrigation systems within their design. We can assist with the specification and planning of this important element of the scheme.





# OUR GREEN ROOF SOLUTIONS

Our green roof systems are available in three broad application categories including intensive green roofs, semi-intensive green roofs, and extensive green roofs and offer engineered living roof systems which are fully compatible with our parent company Alumasc Roofing's warranted [waterproofing ranges](#).

Green roofs benefit the wider environment through their positive impact on sustainability, biodiversity and the attenuation of stormwater. They improve the quality of life for building users whilst providing payback for the environment and can have wide-ranging long term financial benefits.

Green Roof Type	Suitable for	Maintenance
<b>Intensive Green Roof</b>	Planting trees, shrubs and lawns hard landscaping for play and recreation	Considerable amount of maintenance amount of maintenance and regular irrigation during periods of prolonged low rainfall
<b>Semi-Intensive Green Roof</b>	Herbaceous perennials, grasses and shrubs, supported by a deeper layer of substrate	Considerable amount of maintenance amount of maintenance and occasional irrigation during periods of prolonged low rainfall
<b>Extensive - Brown</b>	Recreation or replacing loss of missing habitats. They have no plant material incorporated at install – rely on nature providing seeds.	Minimal maintenance, reliant on seeds being introduced by birds or blown in
<b>Extensive - Sedum</b>	Hardy, drought tolerant sedum planting which include native and non-native species	Minimal maintenance and shouldn't need irrigation once established
<b>Extensive - Biodiverse</b>	Growing plants that encourage recreation or replace loss of threatened habitats by creating food such as seed bearing plants	Minimal maintenance, may require an occasional visit to remove the seasons growth

# WHAT MAKES US GREAT TO WORK WITH?



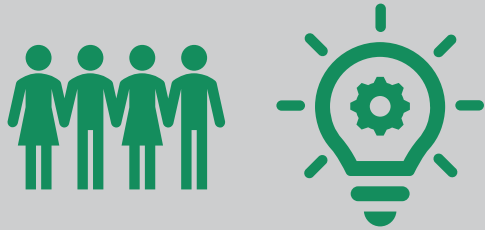
**We don't just supply materials and equipment and leave you to it.** We care about what is achieved as the end result, and as such we work with you throughout the whole process providing advice and support.



**We advise our clients on the most appropriate strategy for the project.** This dedication to detail also follows through to the hard landscaping elements. Paving, decking, soft surfaces and planters are all supplied by leading manufacturers.



# OUR PEOPLE



- ✓ Dedicated Project Manager
- ✓ One source reliable contact
- ✓ Specialists in supply of green roofs and podium landscaping
- ✓ Qualified skilled advisors
- ✓ Many years of experience
- ✓ Understanding of waterproofing roof
- ✓ Solutions and install criteria
- ✓ Reliable and certified sourcing

# OUR SERVICE



- ✓ After sales support
- ✓ Single-source supplier of roofing solutions
- ✓ Compatibility roof survey prior to green roof install
- ✓ Solution assistance and guidance
- ✓ Reliable and certified sourcing
- ✓ Specification compliance
- ✓ Access to tailored maintenance programmes
- ✓ Unique landscaping service

# FAQs

## Why would I want roof and podium landscaping over leaving it plain?

Apart from the aesthetic value and the strong positive statement associated with sustainable design principles, green roofs are typically specified for any one, or a combination of:



**Ecological or environmental benefits**



**Building performance enhancements**



**Financial incentives**



**Planning requirements**



The nature and extent of these benefits will vary with the specific green roof construction. Extensive green roofs can be designed to provide a multitude of benefits, such as SuDS or thermal insulation; biodiverse roofs provide environmental benefits through the conservation of the natural environment and enhancement of biodiversity; intensive roofs typically serve recreation or amenity purpose.



# FAQs

## Does a roof and podium landscaping adversely affect performance of the waterproofing?

No, quite the reverse. Provided that the specification is appropriately formulated and detailed, green roofs can significantly extend the lifespan of the waterproofing beneath. This is due to blocking out ultra violet light, reducing thermal fluctuations, wind scour and climatic stress.



## Won't rainwater leak into my roof?

No, a range of different roof coverings can be used to provide the requisite weather-tightness, including bitumen membranes, liquid applied waterproofing or aluminium standing seam systems. Our parent company Alumasc Roofing can help with any advice needed, ask your representative for more information on this.





# FAQs

## Why not use the roof space for solar panels instead of a green roof or podium landscaping?

The two are actually mutually beneficial. The cooling effect of green roofs can improve the efficiency of solar panels (also known as photovoltaics [PV]). The shade provided by the PV units can also enhance the biodiversity potential of the green roof. Plant species must be carefully selected to suit the partially-shaded conditions, enabling the full benefit of a green roof installation to be realised.



## Can roof and podium landscaping really be a planning requirement?

Yes, green roofs are increasingly stipulated as being mandatory if planning consent is to be granted. The need for sustainable drainage has led the Environment Agency to specify that runoff from many new sites must mimic behaviour of a green field site as closely as possible. Climate change forecasts suggest that the number of such mandates will only increase in the years to come.





# GREEN ROOF FAQs

## What is a green roof?

A roof that is purposely designed to support plant life. Green roofs are typically categorised as extensive, biodiverse or intensive, depending upon their function and maintenance requirement.



## What is an intensive roof?

Also known as a roof garden, an intensive roof provides benefits akin to a domestic garden or small urban park through a combination of soft and hard landscaping. With planting options including lawns, shrubs and even small trees, substrates tend to be greater in depth (i.e. 150 up to 1500 mm), heavier and have a higher organic content. Regular maintenance and irrigation can be expected.



## What is an extensive green roof?

An extensive green or living roof is a low maintenance, lightweight planted roof system that is typically composed of a drainage layer, substrate and a visually attractive plant system that offers solutions to many environmental and building performance challenges.



# GREEN ROOF FAQs

## What is a biodiverse roof?

A biodiverse roof recreates or enhances a habitat designed to attract particularly desirable flora and fauna, whether for environmental benefit (e.g. attracting wildlife) or for building designs that are sympathetic to the local landscape. The planting strategy will therefore involve species that are indigenous to the particular location of the building.

## Are Green Roofs tried and tested?

Yes. It is believed that the first green roof was built at Babylon, where it is considered to be one of the seven wonders of the Ancient World. Modern green roof systems have been in existence in Europe for over 50 years and are commonplace in Germany and other western European countries.

## Is a brown roof the same as a biodiverse roof?

Actually, a brown roof is a particular, non-vegetated version of a biodiverse roof. Brown roofs are designed to self-colonise with native plants over time, using locally relevant substrates, and may incorporate additional features to attract wildlife.





# MAKING A SPACE A PLACE

Specialists in the Supply of Green Roof Systems, Balcony Finishes and Podium Landscaping Solutions.



+44 (0) 1744 648400



info@alumascroofing.com

www.alumascroofing.com



alumascroofing



alumascroofing