

# MONOSCREENED



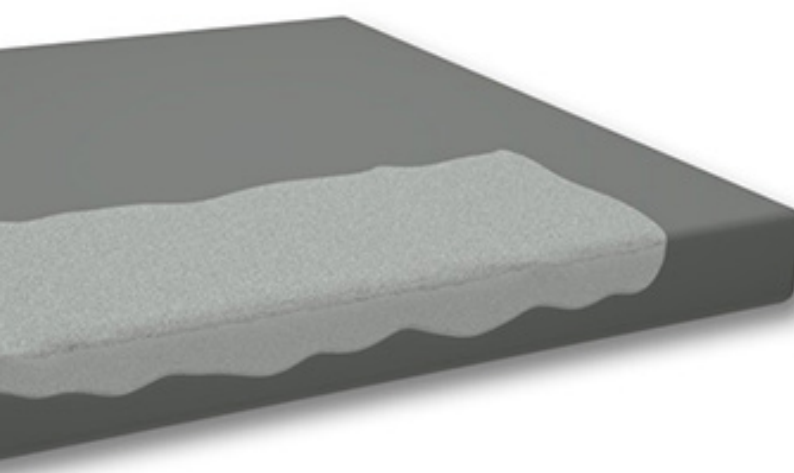
Monoscreed is a fast curing PMMA based compound screed (solvent and isocyanate free) comprising of resin + filler. The cold applied compound can be mixed at roof level and applied to concrete decks (3mm - 50mm) in order to bring deck levels back to tolerance, thus reducing deck deflection/back-falls.

The system is unaffected by ambient temperatures, is rainproof within 15 minutes of being applied and will fully cure in circa 45 minutes, thus offering significant programme benefits when compared with more traditional screeds.

Monoscreed can be applied directly to suitably prepared cementitious concrete which is free from dust, dampness, laitance, grease, oil or other contamination, and if necessary primed with Alumasc Bitumen Primer.

The system comes in pre-measured packs of components which are palletised in order to ensure easy transportation to roof level and accuracy of the compound mix.

Suitable for direct overlay with Alumasc's roofing systems including Hydrotech 6125, Derbigum and Eurorof bituminous membranes and Caltech QC cold-applied liquid waterproofing. Monoscreed is also suitable to be installed over Hydrotech protection sheets where necessary.



## ✓ Key Information

- PMMA resin + filler
- Cold applied - solvent and isocyanate free
- Minimum temperature of application: 5°C
- Thickness: 3mm - 50mm
- Foot traffic: 30 minutes
- Light vehicular traffic: 30 minutes
- Full strength: 45 minutes
- Density: 2.11g/cm<sup>3</sup>
- Consumption can be defined as: 2.11kg/mm/m<sup>2</sup>
- 1m<sup>2</sup> at 10mm requires 21.1kg

## MIXING PROCESS

1. Pour the 2kg Monoscreed Resin into a suitable receptacle
2. Add the 23kg Monoscreed Filler (pre-blended filler + catalyst) and mix thoroughly with a slow speed mechanical agitator or forced action mixer until the material achieves a uniform consistency

## ✓ Product Data

- Contains water: No
- Concrete substrate requirements: Ensure substrate is clean, dry and free from dust, laitance, grease, oil and any other contaminants
- Compatible with concrete: Yes
- Suitable for direct overlay with Alumasc Hot Melt: Yes
- Compatible with Alumasc Bitumen Primer: Yes
- Compatible with sand finished SBS protection membrane: Yes
- Minimum application temperature: 5°C
- Maximum application temperature: +35°C
- Minimum thickness: 3mm
- Maximum thickness: 50mm
- Traffic time/foot traffic: 30 minutes
- Traffic time/light vehicular traffic: 45 minutes
- Full strength: 45 minutes
- Overcoat time: 45 minutes
- Effects of temperature/RH/weather on curing: Negligible

## ✓ Testing Data

EN 1504-3 Certification / CE Marking: Yes - based on resin with filler + catalyst

Compressive strength: based on resin with filler + catalyst EN 12190 : 60.8 N/mm<sup>2</sup>

Flexural strength: based on resin with filler + catalyst EN 12190 : 20.8 N/mm<sup>2</sup>

Adhesion after freeze thaw cycling: based on resin with filler + catalyst EN 13867-1 : >2 N/mm<sup>2</sup>

Capillary absorption (permeability to water): EN 13057 : 0kg/(m<sup>2</sup>h<sup>0.5</sup>)

Notes on test data: the results with the addition of aggregate may vary

# MONOSCREENED



Use large bucket for mixing. Power drill with paddle to be used for mixing.



Pour into bucket 2kg of Monoscreed resin.



Use large bucket for mixing. Power drill with paddle to be used for mixing.



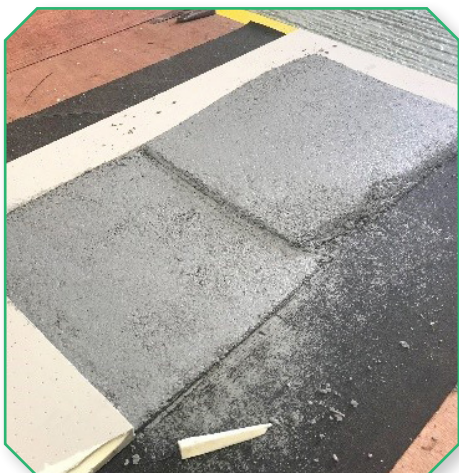
Thoroughly mix for 2 minutes.



Once mixed, the consistency should be uniform & look as above.



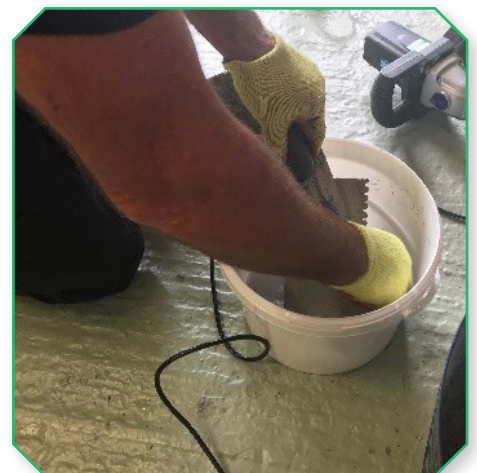
Use trowel to tamp & level the Monoscreed.



Helpful tip: once complete if you wet the trowel with Euroroof Solvent it will give the Monoscreed a smoother finish.



Within approximately 30 minutes from mixing the Monoscreed passed chisel & hammer test.



Always clean tools with solvent.