



ALUMASC
ROOFING

CALTECH COLD-APPLIED LIQUID TECHNOLOGY

A liquid for every application



Proud to have received London Stock Exchange's Green Economy Mark

Your Complete Roofing Solution

Environmentally Focussed | Responsibly Sourced | Ethically Driven

Thank you for taking the time to visit us!

We want to introduce you to Caltech aka Cold-Applied Liquid Technology, **our range of liquids to suit every application.**

The Caltech solutions each have unique application benefits to suit your needs. We have solutions for large open spaces, for complex projects where detailing is required, and also hard-wearing options where footprint is frequent such as balconies. With quick cure, wet-on-wet or moisture-triggered to activate the liquids, you really can pick the application most suited to your project's timescales.

Couple that with up to **25-year lifespan (BBA approved)** and up to **25-year warranty.** Caltech is a range of choice and a durable long-term solution.

Alumasc are a trusted supplier of waterproofing and sustainable roof solutions, offering a full range of building protection products from a single source for the new build and refurbishment sectors.

Our team of knowledgeable like-minded people will work with you to specify the most suitable solution for the unique needs of your project and will be there throughout the design and construction process.

Our aim is to provide quality sustainable building solutions which give long-term peace of mind, supported by our technical expertise and comprehensive range of single source warranty options.

We are committed to continual development and, along with **ISO14001** Environmental Management Standard, **ISO9001** provides the tools to monitor and feedback information from all areas of the business to ensure you get a first-class service.

If you wish to hear more about Caltech and our other range of product solutions that support long-lasting sustainable roofing, then please do not hesitate to get in touch with us at info@alumascroofing.com

Thank you again for your time.

CONTENTS

**OUR TOTAL
DESIGN SOLUTION**

**CALTECH
SOLUTION SELECTOR**

WHY CALTECH?

CALTECH IN ACTION

**CALTECH UV & CALTECH
ALPHA (LOW ODOUR)**

**OUR REASON
FOR EXISTENCE**

**CALTECH FCP - FAST
CURING POLYMER**

**OUR COMMITMENT TO
A PROSPERING FUTURE**

**CALTECH QC - CALTECH
BALCONY, BALCONY+
& COATING SYSTEMS**

**WHAT MAKES US
GREAT TO WORK WITH?**

**CALTECH METCOAT,
AESTHETICS & METEDGE**

ABOUT ALUMASC

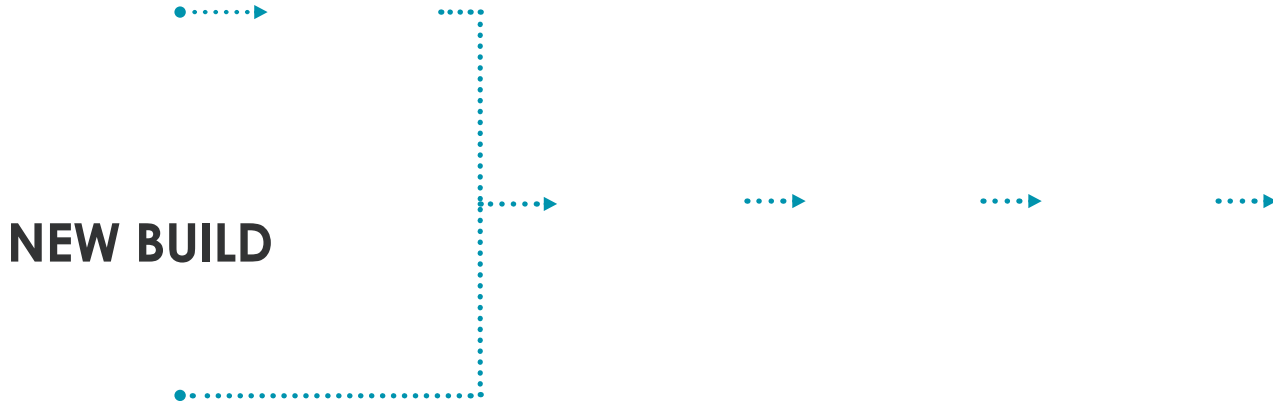


OUR TOTAL DESIGN SOLUTION

Issues can arise during project installation if certain details have not been designed, considered, or allowed for during the design process.

We can support you through your new build or refurbishment project.

REFURBISHMENT



WHY CALTECH?

Alumasc offers Caltech to new build and refurbishment projects. There are many reasons why Caltech should be the range of choice when liquid technology is appropriate.



A liquid for every application



Seamless



Flame-free



Up to 25-year warranty



Easy detailing



**Up to 25-year lifespan
(BBA approved)**



CALTECH - THE OPTIONS

POLYURETHANE MEMBRANES

Single-component, fully reinforced, moisture-triggered polyurethane based membrane.



Good for complex detailing.

Caltech Alpha - Low odour



Low odour option for when odour is an issue.

Download system summary sheet.

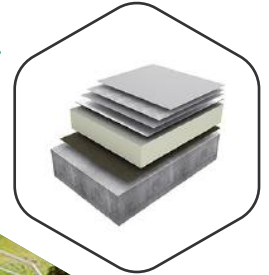


Caltech UV



For when odour is not an issue.

Download system summary sheet.



CALTECH - THE OPTIONS

HYBRID POLYMER RESIN MEMBRANES

Two-component, catalysed, flexible hybrid polymer resin.



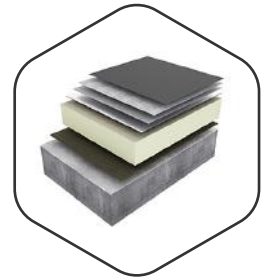
Good for complex detailing, fast curing.

Caltech FCP - Fast Curing Polymer



Quick 2 coat system, when fast application is needed.

Download system summary sheet.



CALTECH - THE OPTIONS

PMMA MEMBRANES

Two-component, self-terminating, Polymethylmethacrylate (PMMA) based waterproofing resin.



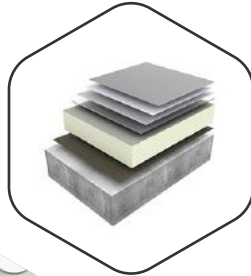
Fleece reinforced, good for quick wet-on-wet application.

Caltech QC



The hardest wearing liquid coating available.

Download system summary sheet.

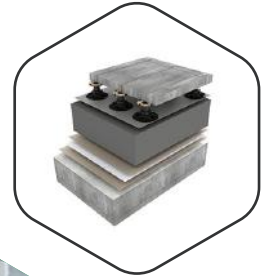


Caltech QC Balcony



For buried and inverted build-ups to external walkways, balconies and terraces.

Download system summary sheet.



CALTECH - THE OPTIONS

PMMA MEMBRANES

Two-component, self-terminating, Polymethylmethacrylate (PMMA) based waterproofing resin.



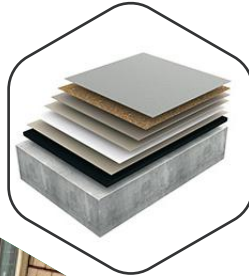
Fleece reinforced, good for quick wet-on-wet application.

Caltech QC Balcony Plus



For external walkways, balconies and terraces.

Download system summary sheet

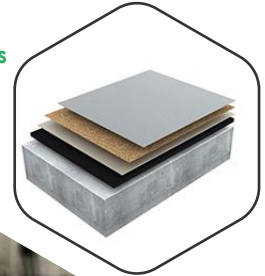


Caltech QC Coating System



For cantilevered walkways, balconies and terraces or areas over an unoccupied space.

Download system summary sheet



CALTECH - THE OPTIONS

ACRYLIC/URETHANE RESIN MEMBRANES

Two-component aliphatic urethane pre-polymer resin.



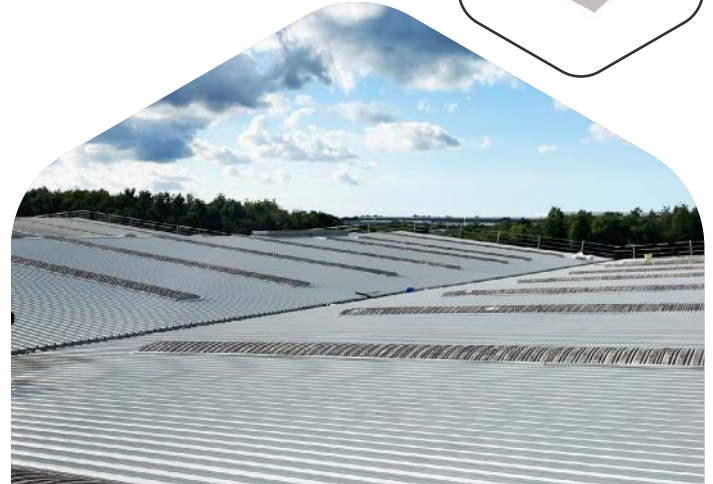
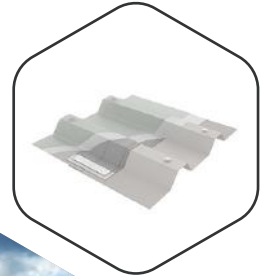
Specifically for pitched metal roofs, and asbestos roofs. Moisture-triggered.

Caltech METcoat



Specifically developed for metal and asbestos pitched roofs.

Download system summary sheet.



CALTECH - THE OPTIONS

ACRYLIC/URETHANE RESIN MEMBRANES

Two-component aliphatic urethane pre-polymer resin.



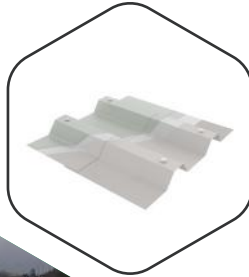
Specifically for pitched metal roofs, and asbestos roofs. Moisture-triggered.

Caltech METcoat Aesthetics



For aesthetics only.

Download system
summary sheet

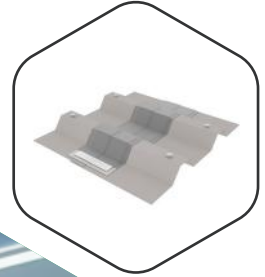


Caltech METedge



Cut edge corrosion treatment.

Download system
summary sheet.



CALTECH SOLUTION SELECTOR

	Applications						Balconies		Warranty Up To (years)			
	Warm Roof	Cold Roof	Inverted Roof	Overlays	Metal Roofs	Asbestos	Directly Trafficked	Proprietary finish	10	15	20	25
Single-Component Cold-Applied moisture-triggered Polyurethane resin												
Caltech UV	Y	Y		Y							Y	
Caltech Alpha	Y	Y		Y	Y							Y
Two-Component Catalysed Flexible hybrid Polymer resin												
Caltech FCP	Y	Y	Y	Y			Y (light traffic)	Y				Y
Two component aliphatic urethane pre-polymer resin												
Caltech METcoat					Y	Y					Y	
Caltech METcoat Aesthetics					Y						Y	
Caltech METedge					Y				Y			
Two-component, self-terminating, polymethylmethacrylate (PMMA) based												
Caltech QC	Y	Y	Y	Y								Y
Caltech QC Balcony								Y			Y	
Caltech QC Balcony Plus							Y				Y	
Caltech QC Coating System							Y				Y	

CALTECH IN ACTION

Dean Field Community Primary School

No More Leaks - Speedy Roof Refurb with Caltech METcoat



PROJECT

Dean Field Community
Primary School - 10 week
turnaround.



PRODUCTS

1,800m² Caltech METcoat
- low odour.



PERFORMANCE

20 - Year warranty, no strip
- no waste, minimal noise
disruption.

Client Brief and Design

"The roof was leaking continuously in multiple areas, and we needed a quick and safe waterproofing solution with quiet installation to ensure the safety and continuity of education for the children in the school." **Says specialist building consultant working in partnership with the school, E3 Cube Ltd.**

Our technical team agreed that to meet the client brief requirements, the best option would be Caltech METcoat, a low odour, cold-applied liquid membrane, which could be applied in just two coats to form a seamless durable membrane with up to 20 years of waterproof protection.

Leon Ferguson, Area Technical Manager – North West,

"We wanted to avoid any roof waste by preserving the metal sheet roofing with the Caltech METcoat coating system and the low odour option ensured there was no disruption to learning."



DEAN FIELD PRIMARY SCHOOL

Challenges

Leon Ferguson, Area Technical Manager – North West adds, “Time was of the essence as the cold winter weather was fast approaching. The METcoat system was an ideal solution because it is very quick to install once the detailing and reinforcement is complete. We were able to turn the job around in just under 10 weeks from specification to completion.”

Partnership

We have deep-rooted relationships with our registered contractors, and we are always pushing to continually set high standards in the Education sector.

Safety Performance

Manufactured in accordance with ISO 9001:2015 and ISO 14001:2015

Alumasc offers a comprehensive range of single-source warranty options for up to 20 years. Installed exclusively by Registered Contractors and underpinned by Alumasc's extensive project support service, Alumasc warranties cover product, workmanship, and design.

Service

As part of the Alumasc Roofing service we offer transparent quality checking and timely site reporting. We are always on-site to assist with any difficulties or issues during or after the installation. Almost all projects come with their challenges but a roofing supplier's ability and willingness to tackle them in collaboration with the client and contractor is of key importance to Alumasc Roofing.

Sustainable Benefits

At the end of the system's life-cycle, only the renewal of the top coat will be necessary, with no need to strip and dispose of any existing membrane.

About

Roofing Contractor: BBR Roofing Ltd
Completion: December 2021



OUR REASON FOR EXISTENCE

‘To deliver long lasting roofing solutions, that consider our planet’



WHAT WE BELIEVE

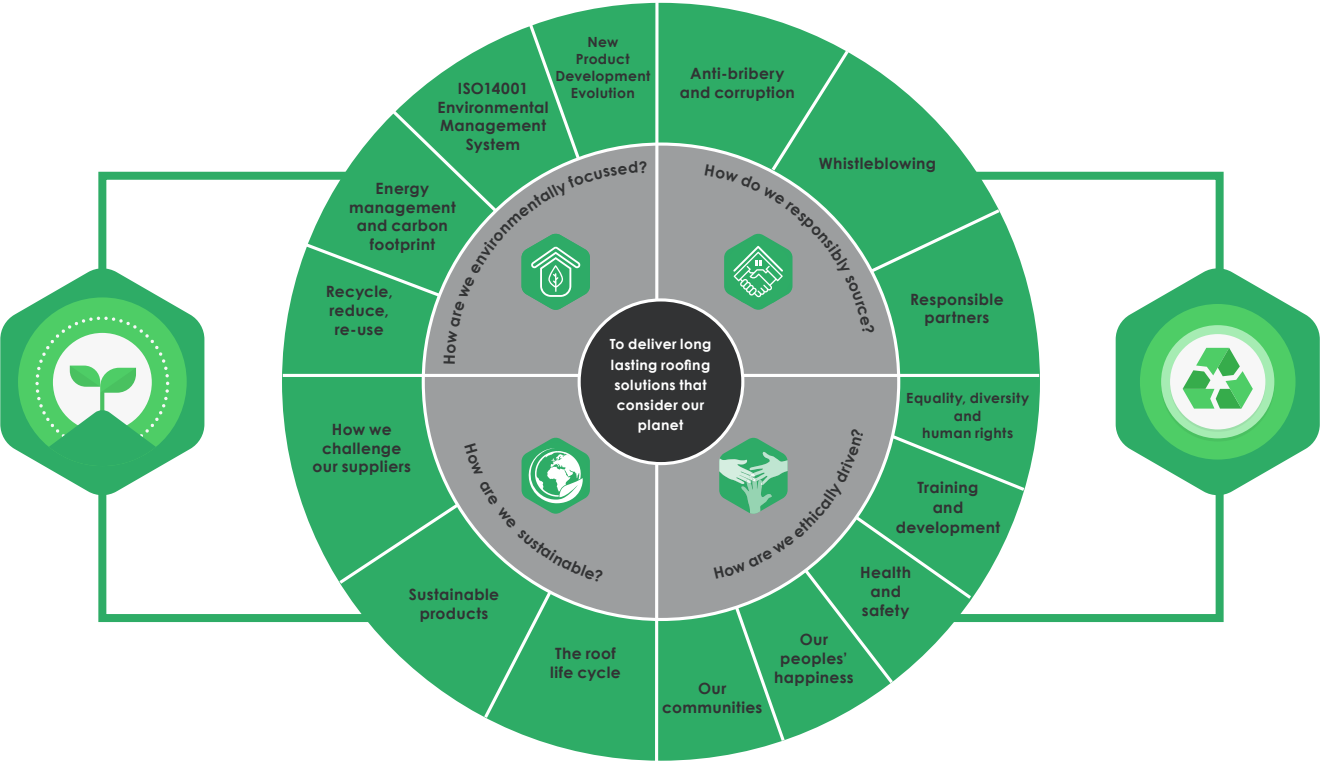
We stand for protect, preserve and respect in all that we do.

Be that for our people, our products, or the world we live in - to secure a prosperous future for all.

We don't just think of the here and now - we consider how we can make a positive difference to the world that follows us, by working with like-minded people who share the same beliefs that we do.

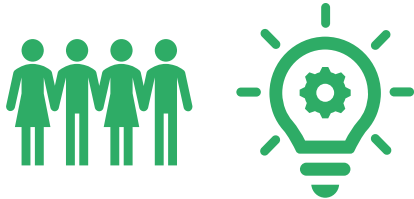
OUR COMMITMENT TO A PROSPERING FUTURE

Our strapline is not just a statement we make. It is the pillars we live, breathe and consider every day in our operations to ensure we give as much as we can back to the future that follows us.



WHAT MAKES US GREAT TO WORK WITH?

OUR PEOPLE



Like-minded individuals, with knowledge that spans a (roofs) lifetime.

We don't just have lots of knowledge - we are also really nice, honest people who will only offer what's right for you, and we don't switch off our phones or hide away when the going gets tough.

If you don't get an 'out of office' then rest assured, one of us will get back to you the same working day.

OUR SERVICE

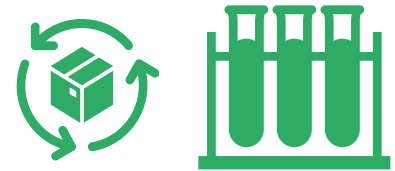


With solutions that give a lifetime of protection, there's no problem that can't be resolved.

We are so confident about the durability and efficiency of our materials, that our warranties are amongst the best available.

Couple that with sound knowledgeable advice, bespoke reporting and technical support excellence, what more could you possibly want?

OUR SOLUTIONS



Some of the most durable roofing materials you will find - tested in-situ, not just in the laboratory.

We focus on durability, longevity and the roof life cycle in our offering, to make sure you get the most from our materials and we reduce the impact on the earth.

Our company policy is one of continuous research and development to further enhance levels of sustainability.

'Alumasc Roofing is the name above our door, but it's our people that make us who we are'

ABOUT ALUMASC ROOFING

Our range of flat roof systems, waterproofing, green and blue roof solutions are ideal for any new build or roof refurbishment project. Our unrivalled range of BBA Certified flat roof systems are backed by:



Happy and helpful on-site and office-based technical support people



Materials application by our trained Alumasc Registered Contractors



Committed to continuous improvement through our ISO9001 Quality Management System and ISO14001 Environmental Management System standards



Extended warranties, as we are confident of our material's durability!



Post-project handover package for all you need to know



After-sales support service, should you need us in the future!

The portfolio includes [Derbigum](#) and [Eurorooft](#) flat roof membranes, [Hydrotech](#) hot-melt structural waterproofing, [Eurorooft Caltech](#) and [Caltech QC \(Quick Cure\)](#) cold applied liquid roofing, [Alkorplan](#) single-ply membranes, [Blackdown](#) green roofs and a full range of complementary accessories such as [Sure-Foot](#) guardrail edge protection systems and [Roof-Pro](#) building services supports.

Alumasc Roofing also provide roofing solutions that are perfect for projects where there is limited construction depth or problematic spacing such as [Alumasc Vtherm Vacuum Insulated System](#).



Proud to have received London Stock Exchange's Green Economy Mark





ALUMASC
ROOFING

Your Complete Roofing Solution

Environmentally Focussed | Responsibly Sourced | Ethically Driven



+44 (0)1744 648400



info@alumascroofing.com

