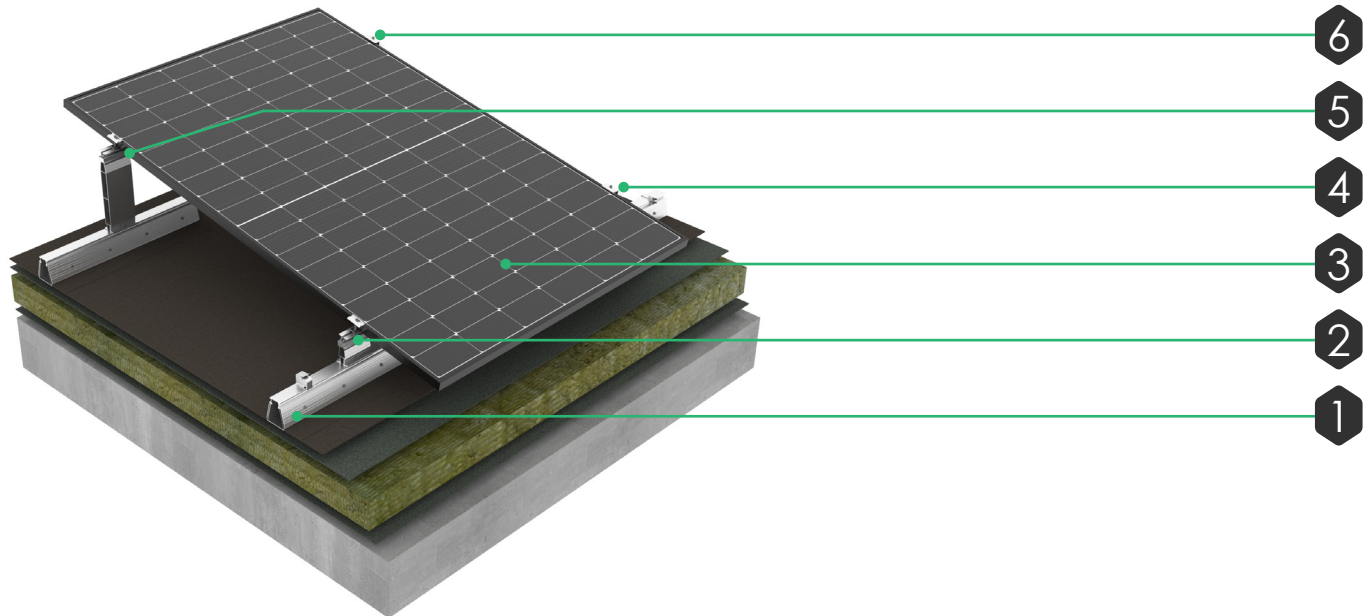


# SOLACELL TILTED WARM ROOF SYSTEM BITUMEN MEMBRANE

Non-penetrative solar mounting system for roof penetration-free mounting or ballasting of PV modules or PV module series. Consisting of aluminium bitumen rails, aluminium high/low tilt supports, and end/universal clamps. Aluminium construction is light, strong, recyclable, and highly resistant to corrosion.



System Options	
6	Solacell High Support End Mount slides onto bitumen rail and positioned to clamp the PV Panel
5	Solacell High Support Universal Mount slides onto bitumen rail and positioned to clamp the PV Panel
4	Solacell Low Support End Mount slides onto bitumen rail and positioned to clamp the PV Panel
3	PV Panel (not supplied by Alumasc)
2	Solacell Low Support Universal Mount slides onto bitumen rail and positioned to clamp the PV Panel
1	Solacell Bitumen Rail Torchted onto Bitumen Membrane incorporates Rail Grounding Connector & Cable Guide

Note: Typical Warm Roof Build-up as per Alumasc specification (only to be installed by Alumasc Approved Installers)

## Key Benefits

- EU manufactured
- Extremely lightweight at 5.5 kg/m<sup>2</sup> due to recycled aluminium construction (excluding PV modules)
- Suitable for new build & refurbishment projects
- Seamless integration with Alumasc waterproofing systems, maintaining system warranties
- Universal brackets to accommodate a wide array of panels
- Bitumen rails provide a linear load distribution, no point loading
- Suitable for roof areas with a roof pitch of 0° to 10°
- Penetration free assembly on the roof
- Available in inclines of up to 15°

Sustainability By Design!